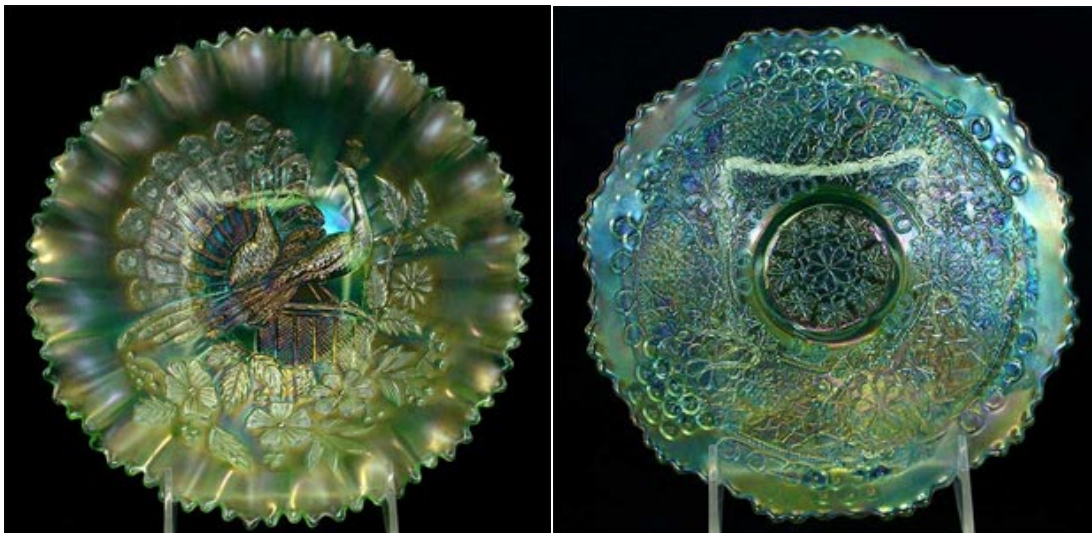




## Ice Green and White

Ice Green and White are two complimentary colors in Joyce Seale's collection, and with the type of iridescence seen throughout that collection, many who see the examples of these two colors are forced to re-define their understanding of two pastels that can offer a wide range of characteristics. "I don't like washed out iridescence on pastels," explains Joyce. "I want a piece that really grabs me and shows me what it is about."

The examples of Ice Green and White below really illustrate Joyce's personal philosophy in collecting. Each offers many striking colors that sometimes lead people to believe it is actually a different color (frequently a stunning blue iridescence shining through.)



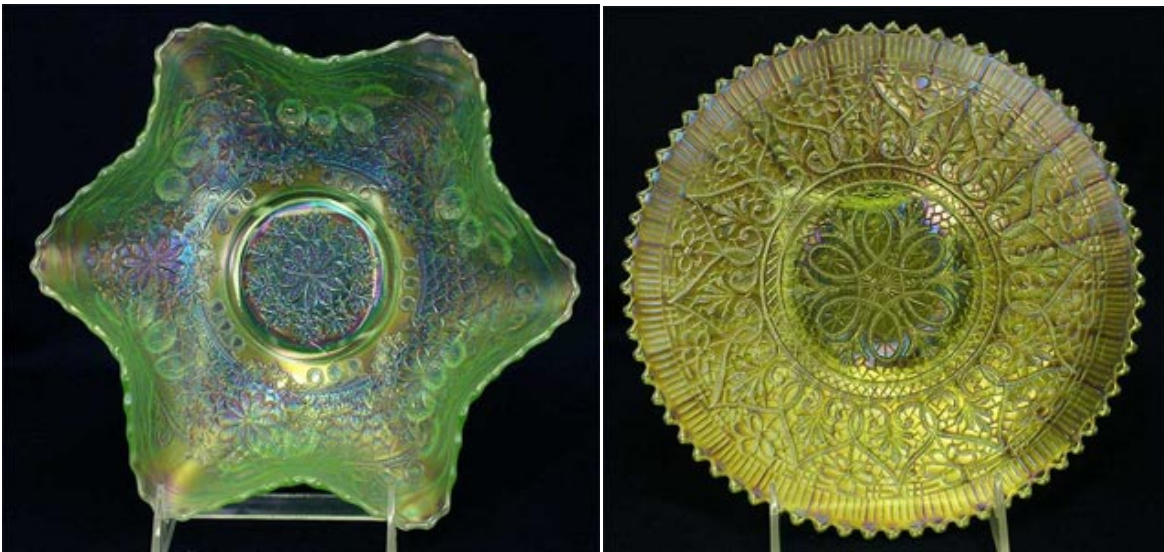
Left: Good Luck PCE bowl with ribbed back. Right: Leaf Chain 7" plate.  
***To see a larger version of the pictures above, click one.***

"I really like like the Leaf Chain plate," says Joyce. "It has really beautiful blue iridescence on top of the rich ice green color. It acts as if it wants to be emerald green, but on an ice green base color instead of a darker green. The way the blue and green colors play on this plate really called to me. I will really miss this plate."



Left: Poppy Show 9" plate. Right: Stippled Grape & Cable ruffled bowl w/ribbed back.

The history of pastel values in carnival glass is a mini-story in itself. In the early period of carnival glass collecting, pastels weren't see as desirable by many collectors. That all changed, of course, with pastels becoming some of the most valuable pieces in many collections. "I bought these because I thought they were beautiful," says Joyce. Though known throughout carnival glass as being a collector of impeccable color, Joyce has also added several very rare pieces to her collection. "Having put together and selling a collection before, I have experienced collecting a wide variety of value and rarity," explains Joyce. "The second time around is more fun because you can fall in love with the glass again."



Left: Leaf Chain ruffled bowl. Right: Lime Green Hearts and Flowers plate.



Left: Persian Medallion 9" plate. Good Luck 9" plate w/ribbed back.

The examples of white above illustrate the power of iridescence on white carnival glass. The Persian Medallion plate has brilliant blues and purples in its iridescence that leads some to believe the plate is Ice Blue until they inspect the base. The Good Luck plate adds greens and yellows to the blues, pinks and purples to give an even broader spectrum of colors to the palette.



Left: Blackberry Open Edge plate. Hearts & Flowers 9" plate.

White is one of the most difficult colors in carnival glass. "So many times you will see a piece of white carnival glass that is so clear and with so little iridescence that you almost can't tell it is carnival," says Joyce. "I love a piece of white that is frosty and full of color. When I find one of these, I always want to add it to the collection because it is so beautiful."



Left: Acorn Burrs 8 pc. punch set. Peacock at the Fountain 8 pc. punch set.

Punch sets in white are always a rare and exquisite find to add to any carnival glass collection, and the two examples above really bring the color. "I love these punch sets," says Joyce. "The cups match the bowl and base in each set very well, and they really do show great color on white."

The pieces will sell Saturday, April 24, 2010 at the Embassy Suites Kansas City International Airport by the Seck Auction Company. To learn more about the Heart of America Carnival Glass Association's convention, of which this auction is a part, please visit HOACGA's website at [www.hoacga.org](http://www.hoacga.org).

All Pictures and Text Copyright Woodsland Media, Seck Auction Company and Joyce Seale.  
All Rights Reserved.